

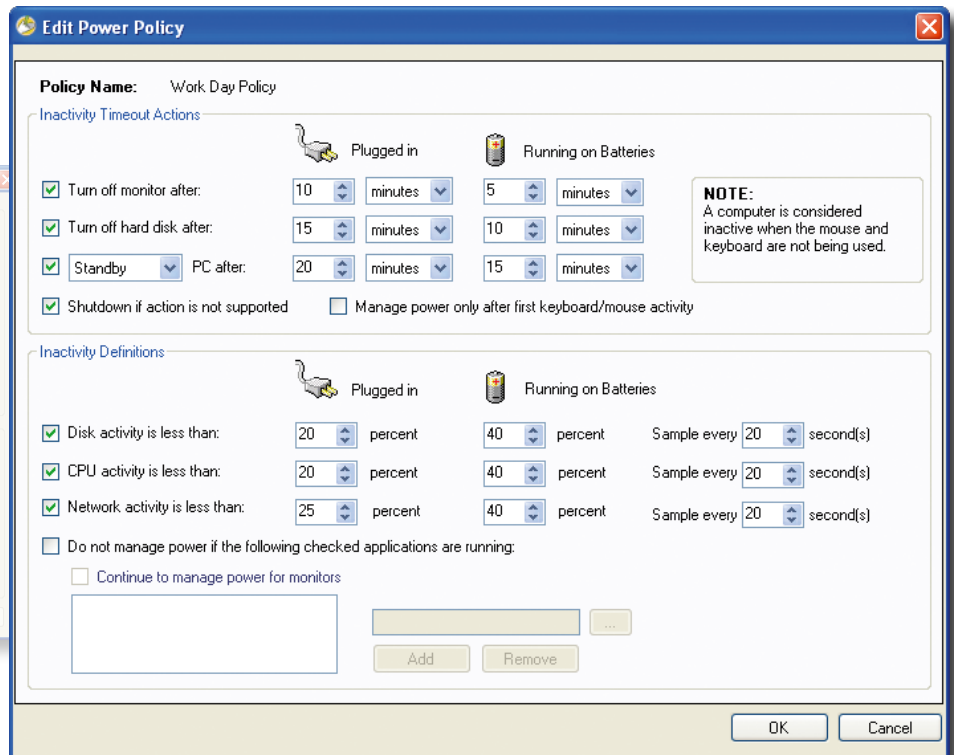
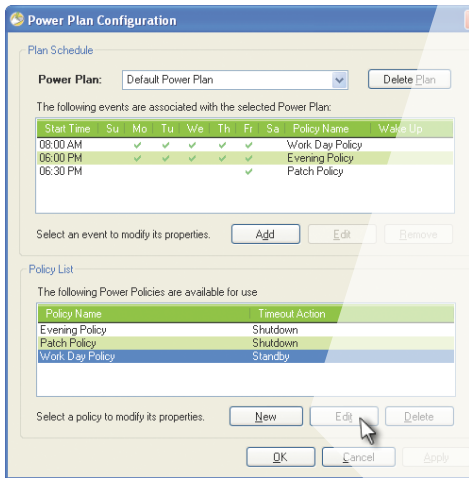


FARONICS
POWERSAVE™

Automated Energy Conservation Power Save Benefits

Faronics Power Save dramatically reduces an organization's operating costs by eliminating unnecessary computer energy consumption. In fact, for every 1,000 computers Faronics Power Save is deployed on, organizations will save up to \$50,000 per year. Faronics Power Save keeps computers running when users need them, powers them down when they are inactive, and can prove its rapid return-on-investment through energy savings reports. Power Save is also non-disruptive—it analyzes CPU, disk, network, keyboard, mouse, and application status before taking power management actions.

- Computer energy management that is non-disruptive to IT and end-users
- Provides tangible financial savings to organizations by reducing computer power consumption
- Proves rapid return-on-investment through enterprise-wide tracking and reporting
- Strengthens IT control over network systems while promoting user productivity at all times
- Fosters feasible environmental responsibility that is easy to deploy and manage



Power Plans allow you to schedule different levels of energy management to be applied on specific days of the week and at different times of the day. Organizations can now employ a daytime Power Policy that employs moderate energy saving actions or an aggressive Power Policy for the weekend.

Key Features

Intelligent Configuration Settings

- Inactivity definitions can be based on multiple criteria
- Recognizes and accommodates to Deep Freeze maintenance schedules
- Notify users before Power Save takes action
- Saves all open Microsoft Office documents, spreadsheets, presentations and email drafts, before powering down

Customized Inactivity Definitions

- Employ energy saving actions when CPU, network or disk activity falls below a defined level
- Prevent workstations from employing power saving actions when a specified application is running
- Power down hard disks to reduce energy consumption
- Activity generated by programs in the non-critical applications list will be ignored

Savings Reports

- Generate energy use and savings reports through Core Console
- Summary and detailed reports display power savings based upon your regional electricity cost
- Audit mode provides a baseline measure of the consumed energy, making it easy to determine the true value of the projected savings generated when Power Save's features are enabled
- Reports related environmental benefits from reduced energy use

“We’ve deployed Power Save enterprise-wide on all our workstations, which is saving us over \$50,000 per year in energy costs. That’s \$50,000 that we now have to buy new IT equipment and software, hire more personnel, or invest into employee training.”

– Sung Lee, Director of Computer Support, Howard Community College



Enterprise Power Management

- Override a workstation’s operating system power settings
- Match each workstation’s power use to an Energy Consumption profile
- Multiple Power Plans and Policies allow for different levels of energy management on specified times and days
- Distinct settings for AC power and battery power

Enterprise Control

- Faronics Core provides central workstation control
- Create workstation groups based on user-defined parameters, such as departments, physical locations, and user groups
- Wakeup workstations via a web browser
- Workstation agent can be deployed via Core Console or third party desktop management tools.

Flexible Scheduling

- Turn off monitors, & standby, hibernate or shutdown computers
- Schedule Wake-on-LAN, shutdown, or restart events
- Schedule Power Save configuration updates
- Schedule a temporary window when Power Save will not enforce energy management policies for maintenance tasks

Full Operation Report: 09/1/2009 to 09/30/2009

Report Summary:
 Report created: Wed, Sep 30, 2009 1:53 PM
 Number of workstations: 800
 Average Savings: \$7.13
 Total Energy Consumed: \$1,814.29 kWh
 Total Cost of Energy Consumed: \$9,326.83
 Total Energy Savings: \$5,028.09 kWh
 Total Projected Annual Savings: \$5,763.22

The energy saved by powering down your 800 computers is equivalent to:
 • Removing 13.6 tons of CO₂ from the atmosphere
 • Planting 8.1 acres of forest
 • Conserving 82.0 barrels of oil
 • Tying 6.5 cars off the road

Source: EPA calculations

Name	Monitor On (watts)	Monitor Standby (watts)	Computer On (watts)	Computer Standby (watts)	Energy Cost (¢ / kWh)	Workstation Count	Energy Saved (kWh)	Savings (\$)
Dell 170L + Dell 30"	142	18	163	3	11.4	101	10513.79	\$1,198.58
Dell B110 + Viewsonic 21"	142	18	132	2	11.4	109	4639.18	\$531.17
Dell B310 + Dell 30"	142	18	132	2	11.4	133	12192.33	\$1,379.49
Dell B310 + Nokia 21"	134	20	165	1	11.4	72	6644.45	\$757.46
Dell G630 + Viewsonic21"	30	15	117	5	11.4	189	10589.92	\$1,204.97
Dell XPS m1130	20	4	56	5	11.4	103	2446.76	\$278.95
Dell XPS ThinkPad	25	4	65	15	11.4	101	3091.66	\$352.43

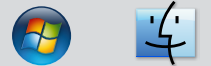
Detailed Power Save Performance Report

Name	IP Address	MAC Address	Workstation Group	Monitor Standby (days)	Computer Standby (days)	Computer Off (days)	Energy Saved (kWh)	Energy Consumed (kWh)	Savings (\$)
1 123-CAMP2-LAB2-27	172.16.130.62	00:11:92:48:4A:4A	Dell 170L + Dell 30"	28.2	0.0	22.7	186.88	211.84	\$19.00
2 075-CAMP164-LAB8-13	172.16.210.115	00:0E:0C:0C:79:42	Dell B110 + Viewsonic 21"	26.2	0.0	25.7	61.070	102.73	\$10.38
3 080-CAMP13-LAB11-25	172.12.82.25	00:07:E9:D2:88:70	Dell B310 + Dell 30"	15.4	0.0	15.0	93.29	106.12	\$10.84
4 122-CAMP21-LAB1-65	172.30.173.14	00:0F:1F:61:63:09	Dell B310 + Nokia 21"	20.0	0.0	21.3	125.73	177.29	\$17.41
5 132-CAMP9-CL1-20	172.16.130.67	00:0C:F1:71:23:AD	Dell G630 + Viewsonic21"	27.2	0.0	26.8	104.51	117.37	\$11.91
793 011-CAMP2-LAB1-15	172.18.3.141	00:13:20:A4:98:74	Dell 170L + Dell 30"	23.3	0.0	23.1	173.67	194.89	\$19.80
794 065-CAMP9-SIM1-01	172.35.130.93	00:3C:29:38:A5:37	Dell XPS ThinkPad	23.2	0.0	21.7	43.07	56.16	\$5.14
797 033-CAMP7-CL18-12	172.22.194.188	00:0C:29:3E:09:19	Dell XPS m1130	1204	0.0	11.5	20.78	51.42	\$2.37
798 025-CAMP5-LAB5-08	172.11.142.113	00:0E:21:88:4F:83	Dell G630 + Viewsonic21"	26.4	0.0	26.5	100.75	117.05	\$11.49
799 136-CAMP4-LAB9-066	172.11.69.159	00:0F:15:A8:A2:19	Dell G630 + Viewsonic21"	27.2	0.0	26.8	104.51	117.37	\$11.91
800 024-CAMP1-CL1-054	172.30.18.177	00:10:29:84:4F:07	Dell B310 + Nokia 21"	20.0	0.0	16.4	112.78	178.29	\$13.37
Power Save has saved 50028.09 kWh of energy and \$5,763.22.									

System Requirements

The Power Save client computer requires Windows 2000 SP4, Windows XP SP2, Windows Vista and Windows 7. Faronics Core Console system requirements can be found in the Faronics Core Console user guide. It is highly recommended that all components be installed using a Windows Administrator account.

Available for:



FARONICS™

Intelligent Solutions for **ABSOLUTE** Control

- | | | |
|--|--|---|
| <p>❖ Canada/International
609 Granville Street, Suite 620
P.O. Box 10362
Vancouver, BC, V7Y 1G5</p> | <p>International Tel
+1-604-637-3333</p> <p>sales@faronics.com</p> | <p>International Fax
+1-604-637-8188</p> |
| <p>❖ USA
2411 Old Crow Canyon Road, Suite 170
San Ramon, CA
94583</p> | <p>Toll Free Tel
800-943-6422</p> <p>sales@faronics.com</p> | <p>Toll Free Fax
800-943-6488</p> |
| <p>❖ UK
Siena Court, The Broadway
Maidenhead, Berkshire,
SL6 1NJ</p> | <p>Tel
+44-162-850-9008</p> <p>eurosales@faronics.com</p> | <p>Fax
+44-162-850-9118</p> |

Download

a free, fully functional evaluation copy at

www.faronics.com

For more information on joining our **Partner Program** visit

www.faronics.com/partners